

ACリアクトル出荷試験データ表

図番	01ACR-A3-8256	客先		15~20 μ H	20 kHz	台数	1
----	---------------	----	--	---------------	--------	----	---

【Name Plate】

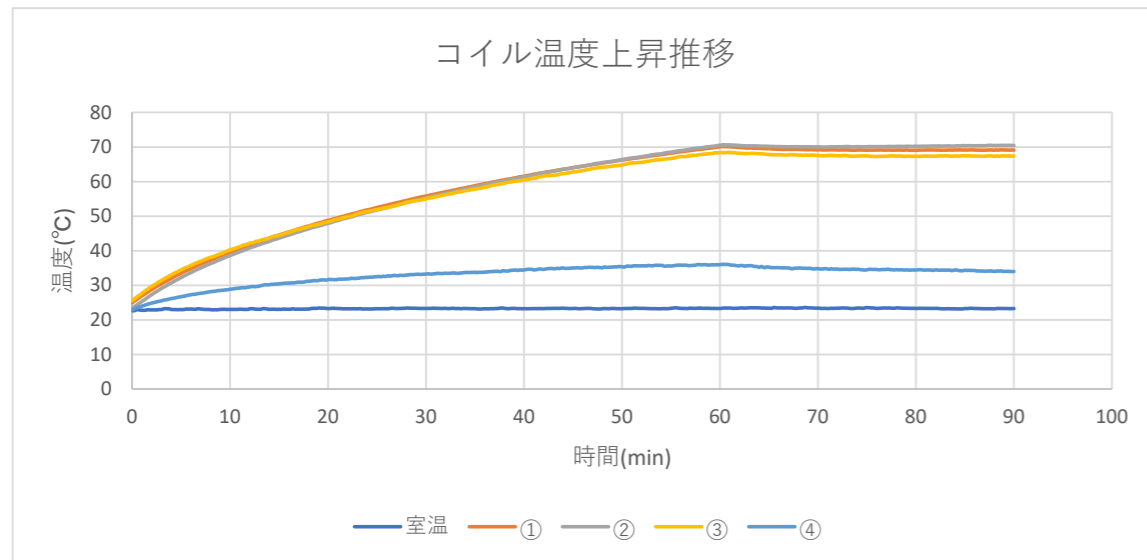
AC REACTOR			
TYPE	6T-2P-3S	RATING	CONT.
INDUCTANCE	15~20 μ H	FREQUENCY	20 kHz
VOLT TO GROUND	900 V	RATED CUR.	128 A
		WEIGHT	40 kg
SERIAL NO.		DATE	2019.12

【3】連続通電試験(定格120%電流60min通電後、定格電流30min通電)

定格f(kHz)	20	試験回路	L=0/3T+20sqケ-プル(2本)+CT=50T+入力//鉄板(本機より50mmの距離)
試験f(kHz)	20	定格電流(A)	128 試験電流(A) 128 154

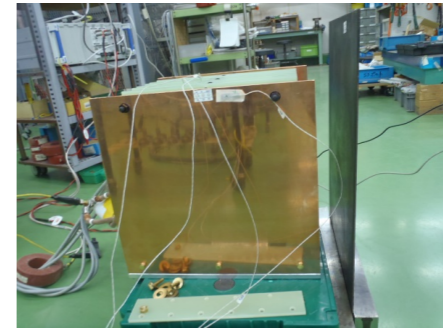
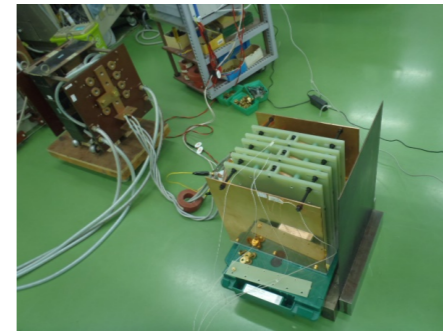
Time.	パワーメータ							C (μ F)	L (mH)	室温 ($^{\circ}$ C)	熱電対測定温度($^{\circ}$ C)			
	V(V)	I(A)	W(W)	P(VA)	Q(Var)	cos θ (-)	f(kHz)				CH1	CH2	CH3	CH4
0	466.668	154.581	185.00	72138.0	72138.0	0.00256	20.165	42.495	23.827	22.7	24.9	23.5	25.5	22.9
10	465.246	153.689	183.00	71503.0	71503.0	0.00256	20.209		23.841	23.0	39.6	38.6	40.2	28.9
20	462.928	152.596	183.00	70641.0	70641.0	0.00259	20.242		23.853	23.3	48.8	47.9	48.4	31.6
30	467.142	153.725	187.00	71812.0	71811.0	0.00260	20.271		23.859	23.3	55.8	55.2	55.0	33.2
40	470.387	154.878	282.00	72853.0	72852.0	0.00386	20.290		23.824	23.3	61.5	61.4	60.5	34.5
50	468.014	153.954	281.00	72053.0	72052.0	0.00389	20.305		23.827	23.2	66.2	66.4	64.8	35.4
60	467.280	153.707	281.00	71824.0	71824.0	0.00391	20.304		23.830	23.3	70.1	70.5	68.4	36.0
70	390.781	128.682	191.00	50286.0	50286.0	0.00381	20.287		23.824	23.4	69.2	70.0	67.6	34.8
80	391.572	129.033	192.00	50526.0	50526.0	0.00380	20.273		23.824	23.3	69.0	70.2	67.3	34.4
90	391.108	128.712	133.00	50340.0	50340.0	0.00263	20.263		23.867	23.3	69.1	70.4	67.4	34.0

コイル温度上昇推移

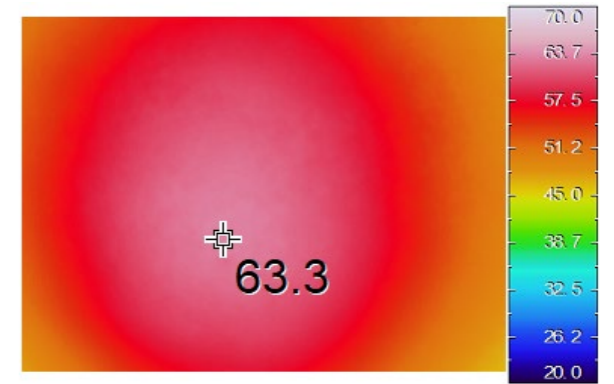


試験日	R1.12.12	試験者	木城
-----	----------	-----	----

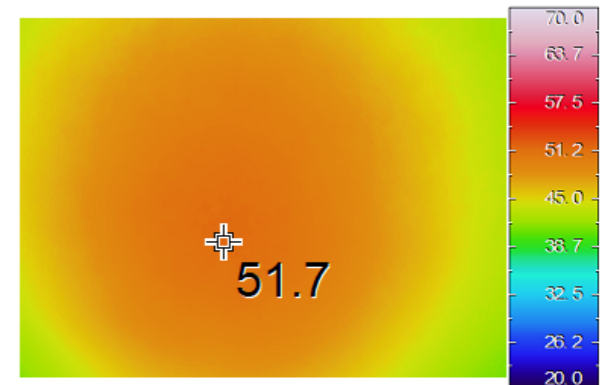
連続通電試験画像



鉄板熱画像(60min 153A)



鉄板熱画像(90min 129A)



コイル熱画像(90min 129A)

